



Photo © Matjaž Bedjanič



ERBFacility Working Group 4 Slovenia workshop (September 2019)

Introduction to communication needs

Photo © Edmund
Fellows / BTO Images



Dr Chris Wernham (Associate Director, Country Offices)

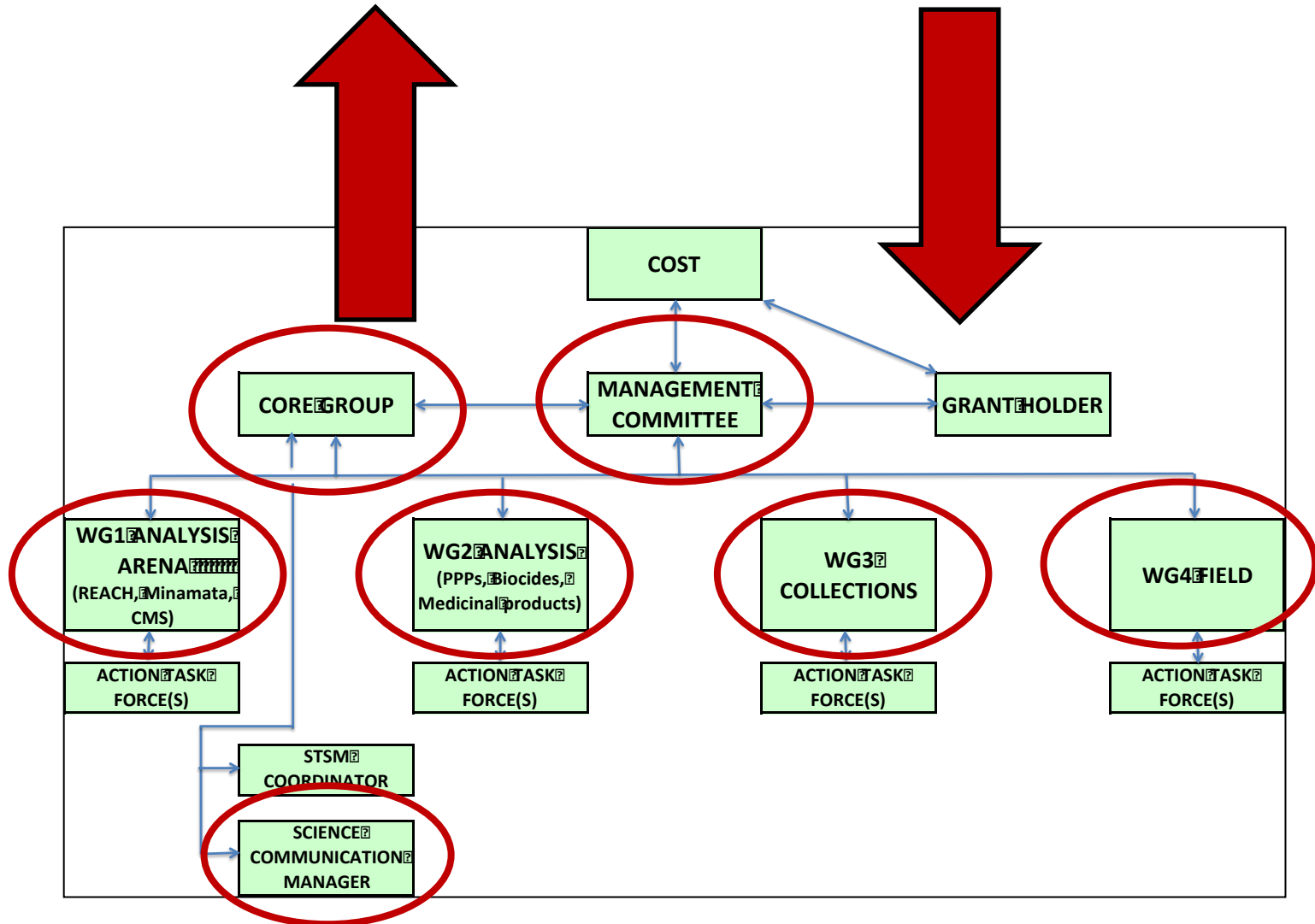
BTO Scotland, Stirling University Innovation Park, Stirling, FK9 4NF, SCOTLAND (UK)



The ERB Facility Network

Dissemination of outputs
for applied benefits

Network participants to assist
delivery (including STSMs)

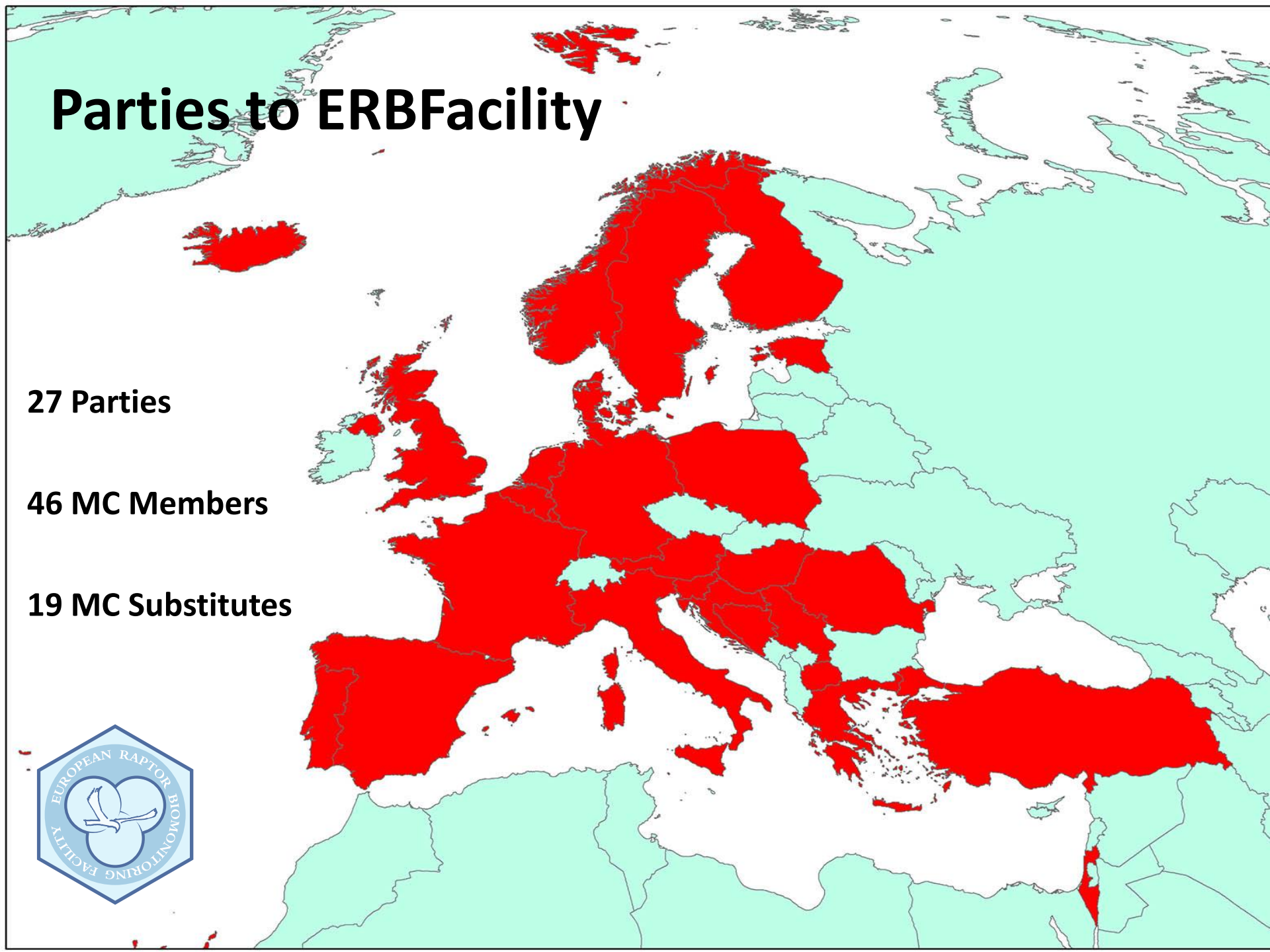


Parties to ERB Facility

27 Parties

46 MC Members

19 MC Substitutes





COST policies

- **Geographical coverage/ICT countries**

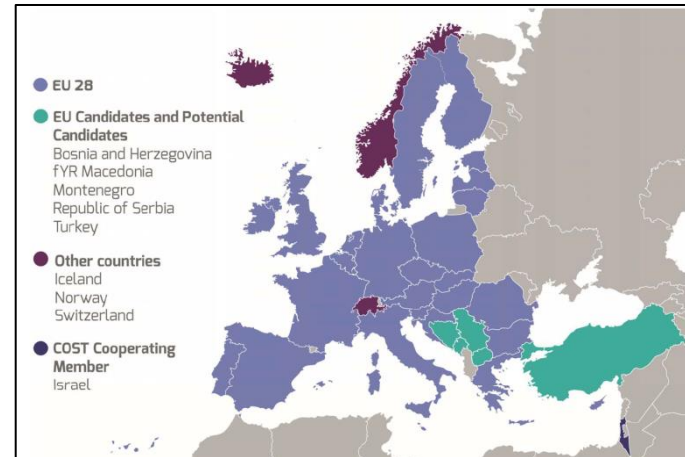
- 27 of 37 COST countries
- 11 of 27 Parties ICT (40%)

- **Gender balance**

- Only 12 of 46 Members female
- 2 of 4 WG Leads female

- **Early Career Investigators**

- Several ECIs on MC





Introduction to communication needs

Photo © Edmund Fellowes / BTO Images



- How do we make sure that we maximise the inclusiveness of the ERBFacility network?
- How do we get more of the existing network actively engaged in the work (delivering the work and disseminating the outputs later)?
- How do we better reach people and organisations not already involved?

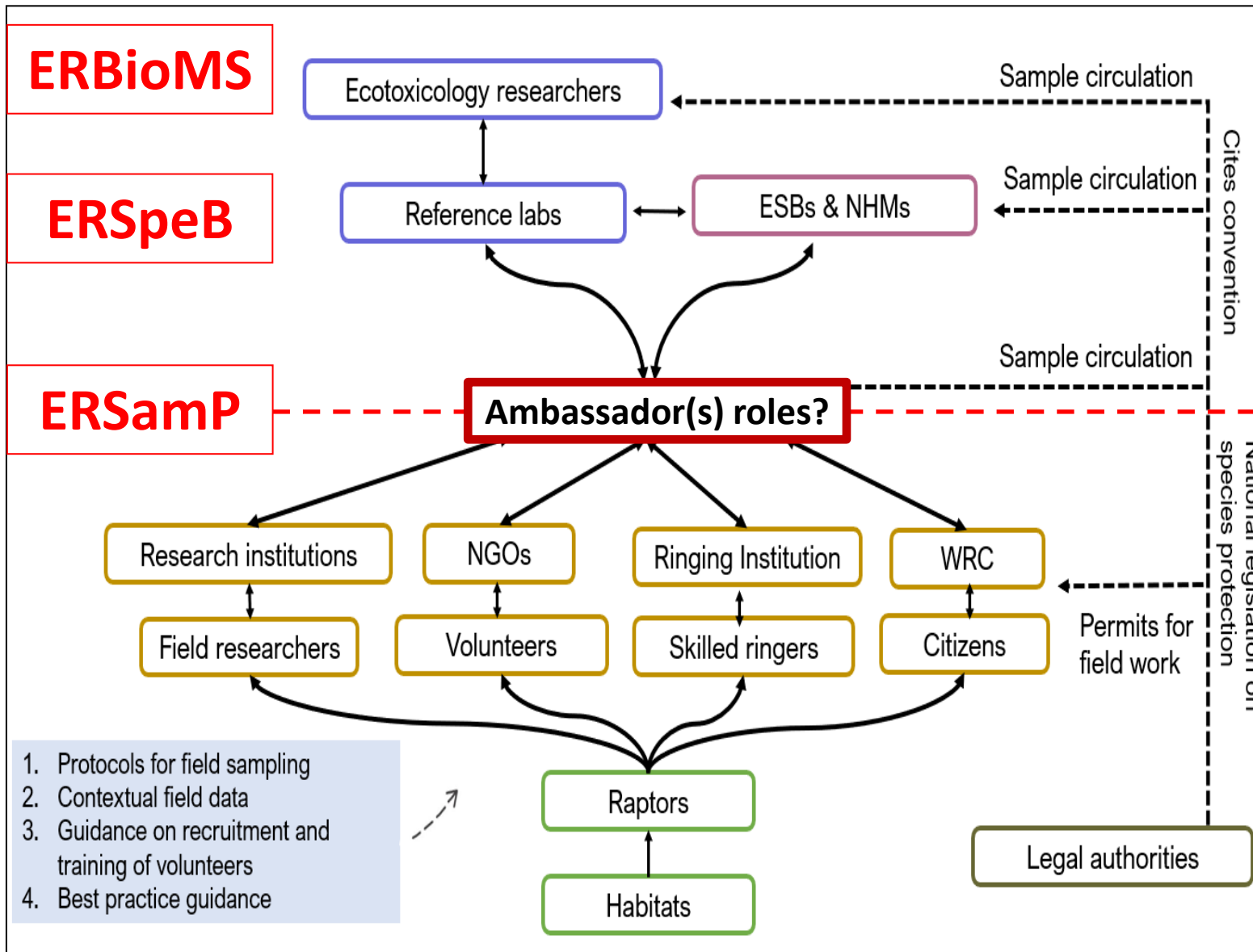
European Raptor Sampling Programme (ERSamP)



- **Vision and overall objectives** of the Sampling Programme
- Focal **contaminant types, sample types, traits/species** and **geographical areas** (sample sizes)
- Generic **best practice guidance – sampling protocols** – Espin *et al.* EURAPMON – enhanced
- Generic **best practice guidance** – collection of **contextual data**
 - data relevant to individual sample (e.g. date, time, species, age, sex, location etc – essential)
 - data relevant to individual bird (e.g. breeding success, movements)
 - data relevant to population (e.g. population trends, timing of breeding productivity, survival, movements) e.g. Hardey *et al.* *Raptors – a Field Guide to Survey and Monitoring*
 - environmental data – (e.g. known contaminant sources; local land use)
- **Project- and species-specific best practice guidance** (e.g. falcons; vultures)
- **People and institutions** available to collect samples and contextual data in the field
- Generic **best practice guidance on how to engage / motivate / train field participants** by actor group
- **Project-specific guidance for involving people in the field** e.g. for proof of concept studies
- Consideration of logistics e.g. **national ambassadors / coordinators / focal points**

- “The collection of the right samples from the right locations at the right times”
- Standards and protocols to ensure harmonised sampling methods and recording of contextual data

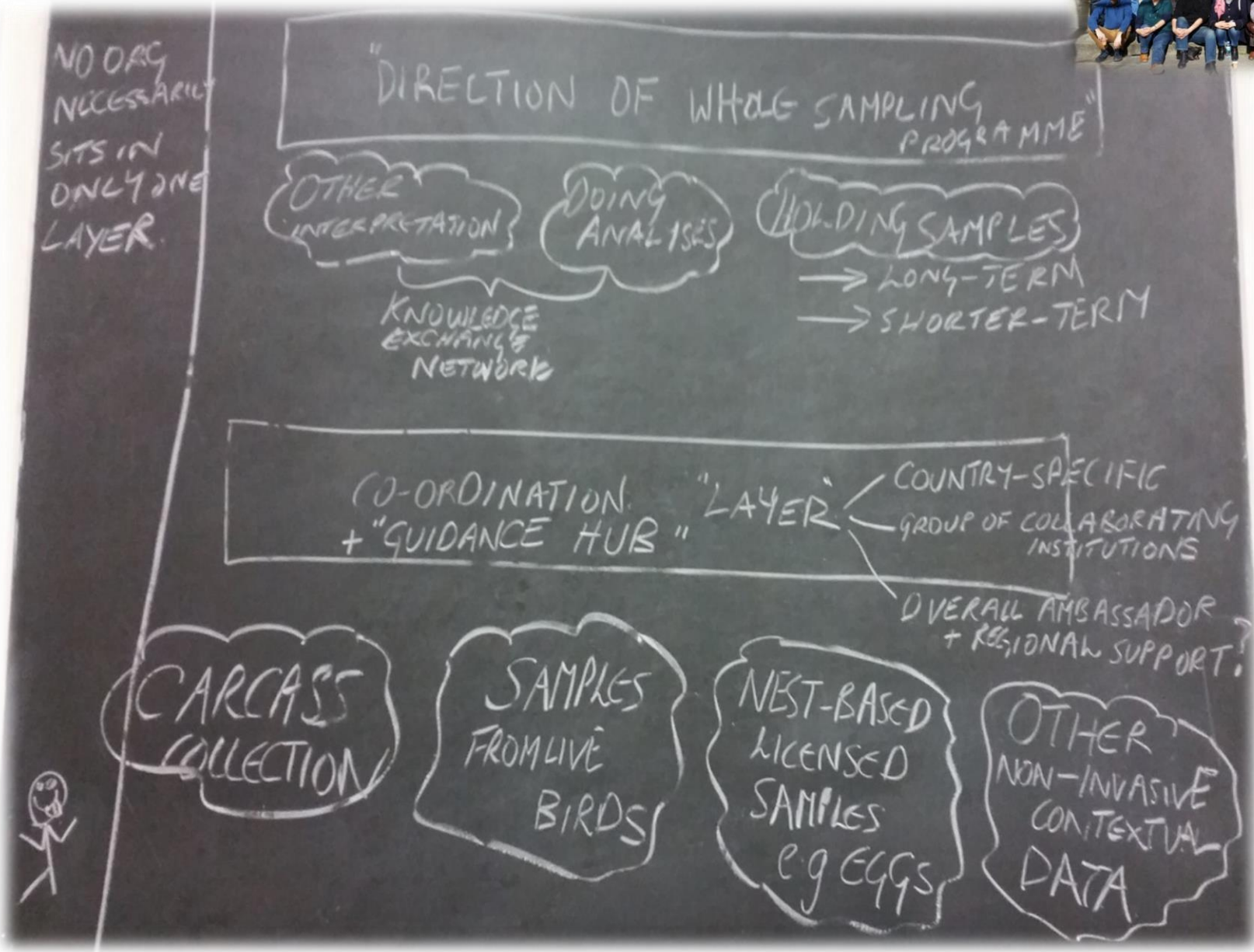
European Raptor Sampling Programme (ERSampP)



➤ The collection of the right samples from the right locations at the right times

➤ Standards and protocols to ensure harmonised sampling methods and recording of contextual data

European Raptor Sampling Programme (ERSamP) – based on functions rather than organisations





Communication needs session

- Better communication within the ERBFacility network - how do we get more people actively involved? **Madis** – Oliver, Emma, Yael, Al
- The possible role of ‘ambassadors’ – will they work and how do we train them or secure their support? **Rui** – Gunnar, Gaby, Ulf, Marcello, Manu
- What other things can we do to promote best practice and disseminate guidance to the different groups of actors (including training)? Pablo, Silvia, **Meto**, Jovan
- How to do this for the Proof of Concept study to test communication approaches?

